

INSPE ANGERS

Préfecture des Pays de La Loire, SGAR

DCE - janvier 2025



SOMMAIRE

1/Etat Existant

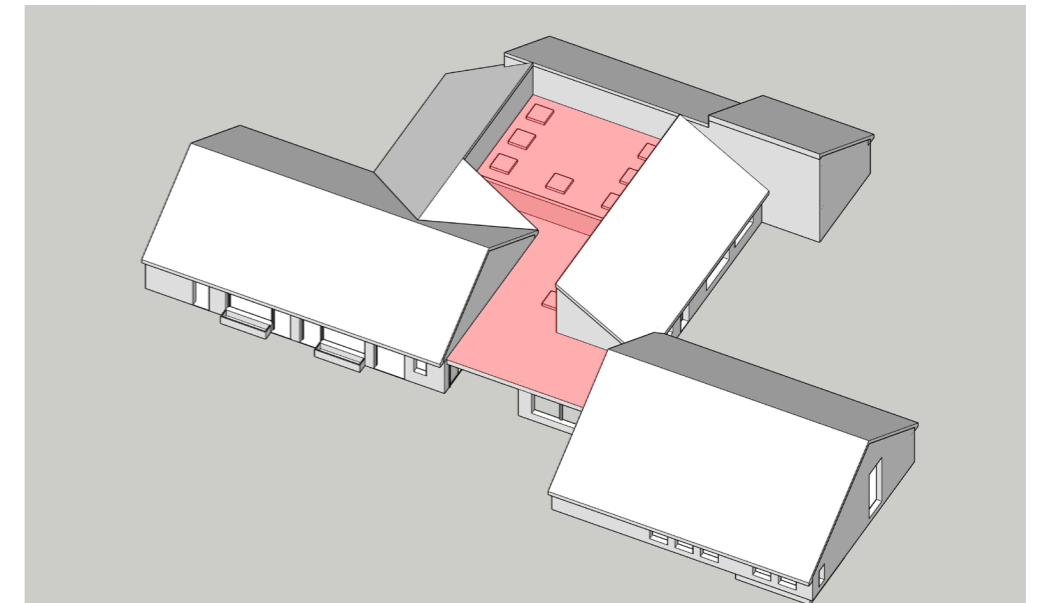
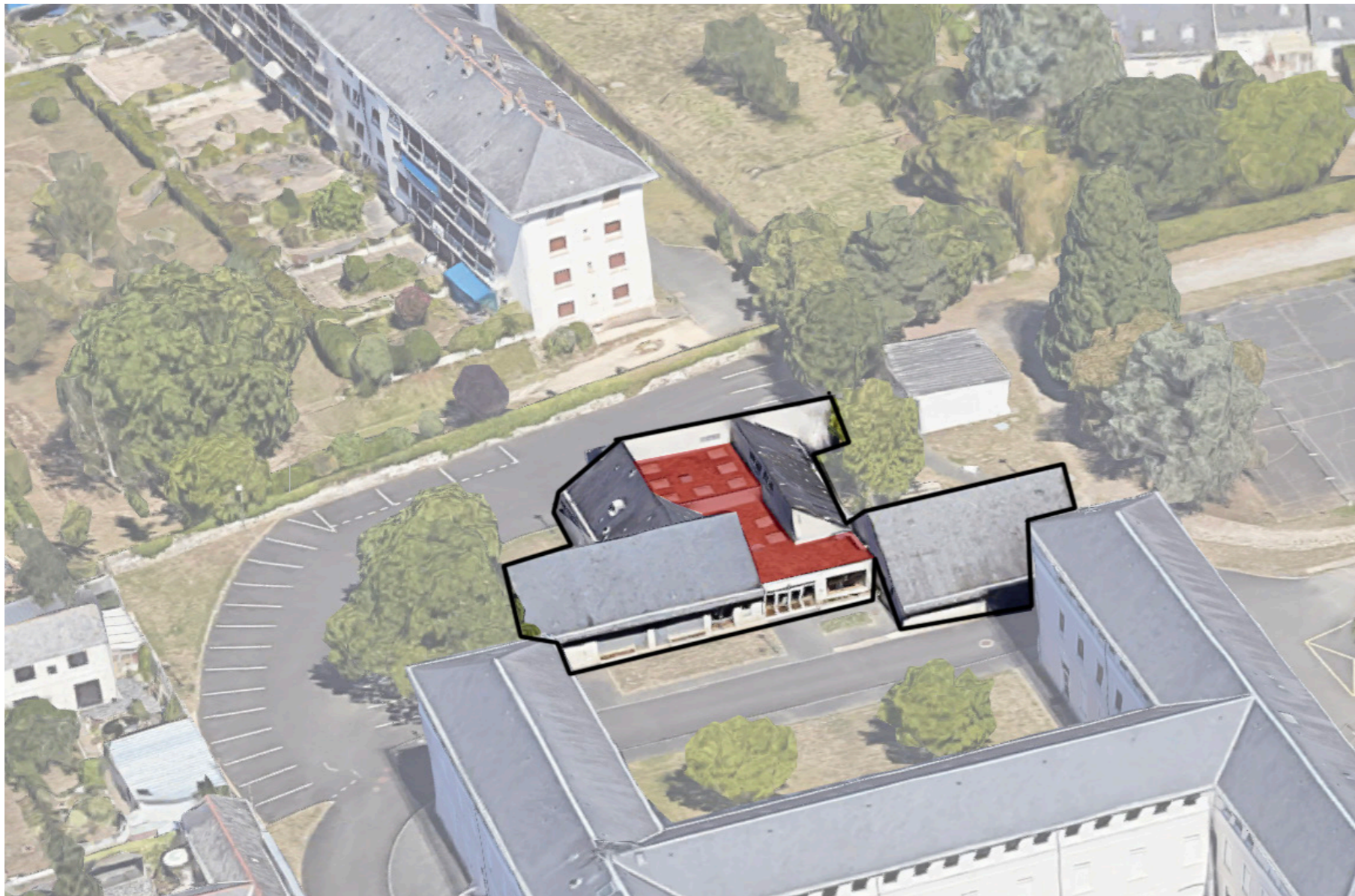
Plans	p. 05
Coupes	p. 06
Photographies	p. 07

2/Projet

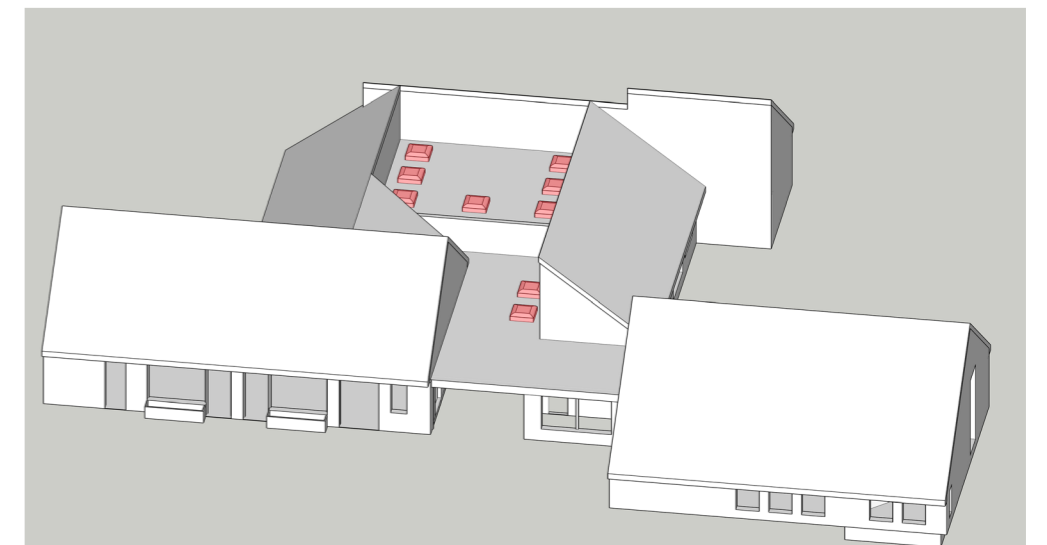
Réfection de l'étanchéité et changement des lanterneaux	p. 08
---	-------

1/Etat existant

Réfection d'étanchéité et C hangement des lanterneaux sur le toit-terrasse de l'INSPE

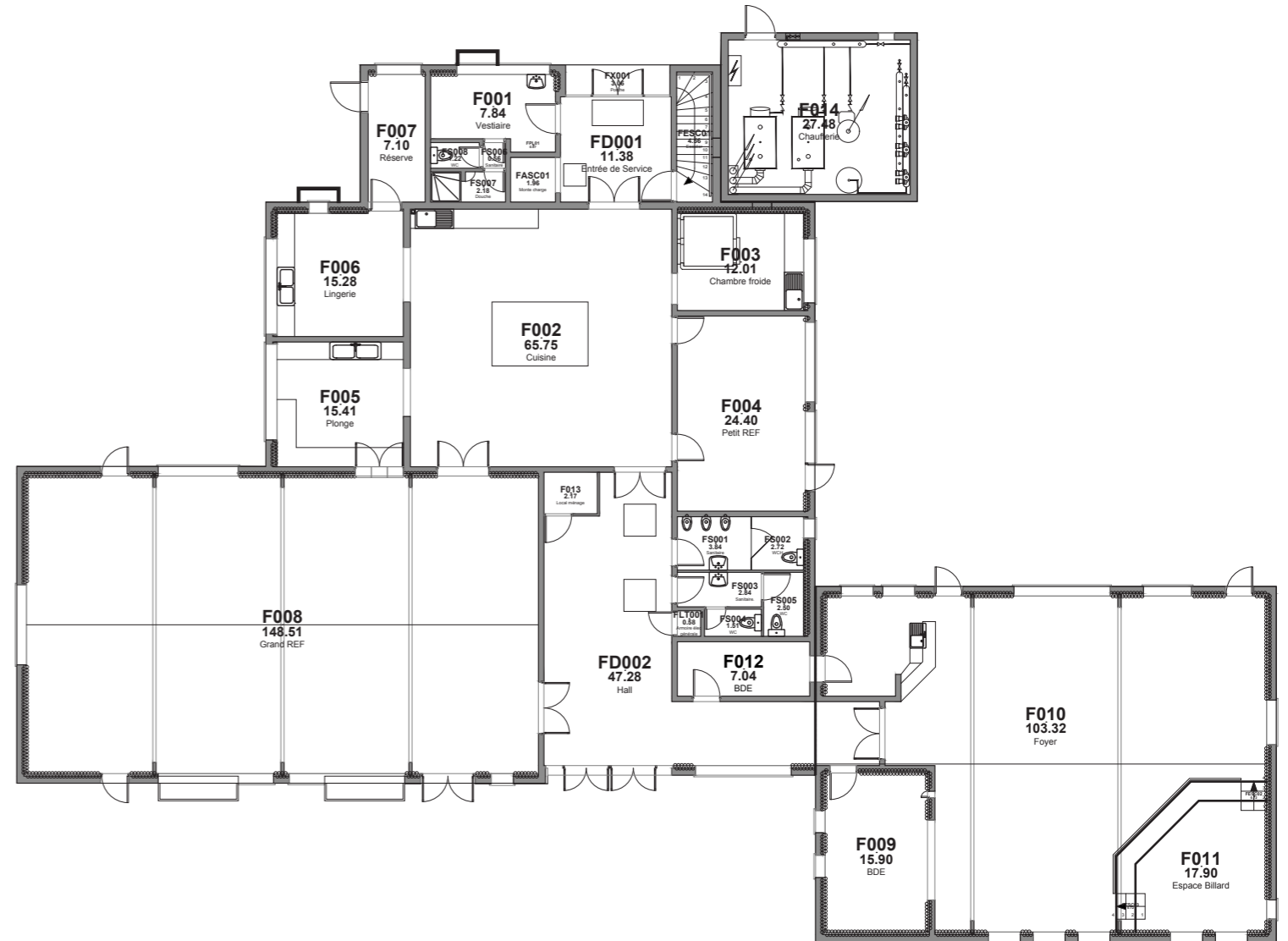
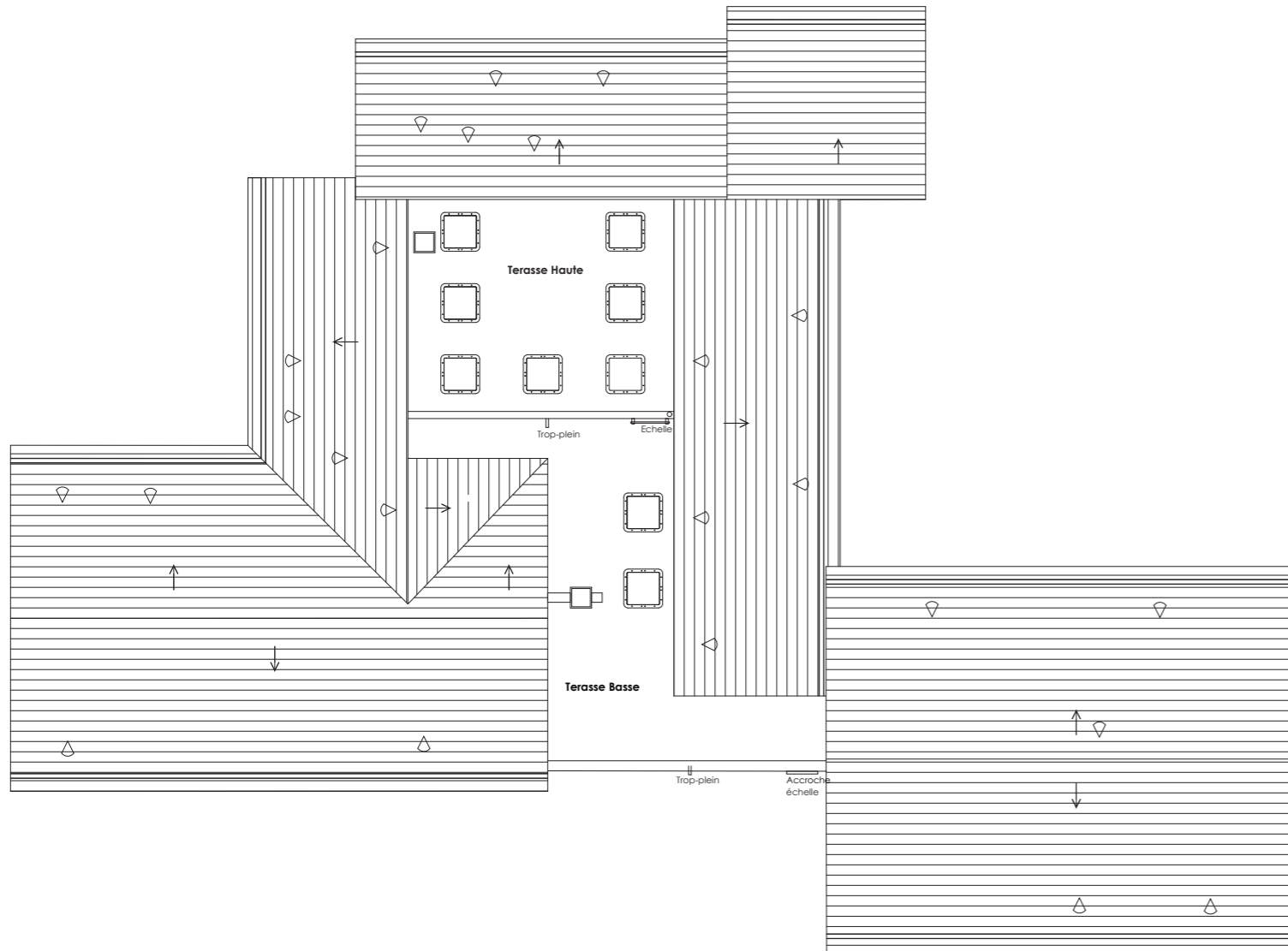


Zone d'intervention réfection d'étanchéité



Zone d'intervention changement des lanterneaux

1/Etat existant

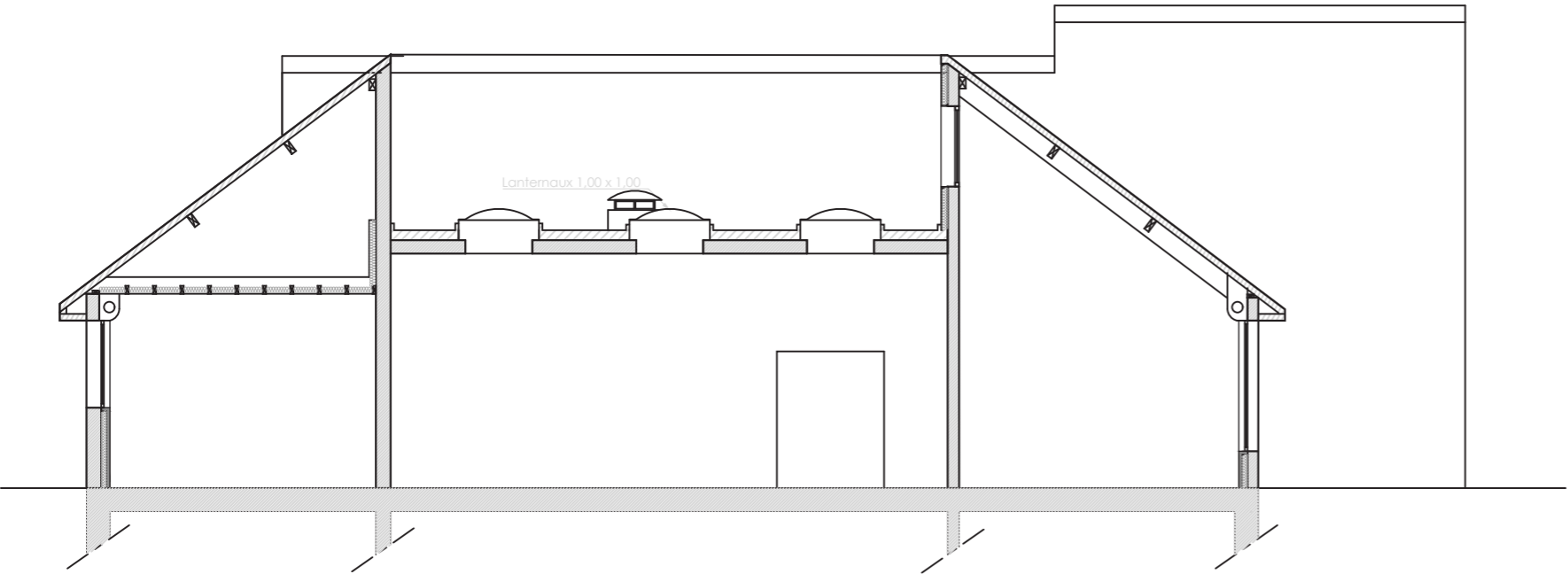


Plan de toiture 

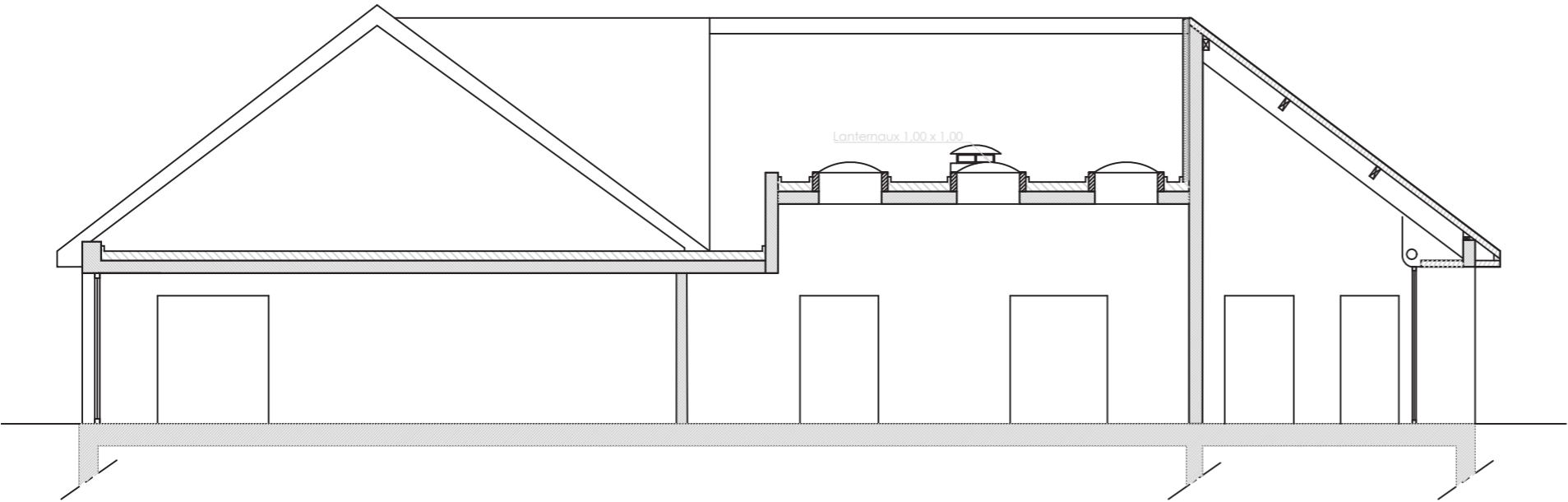
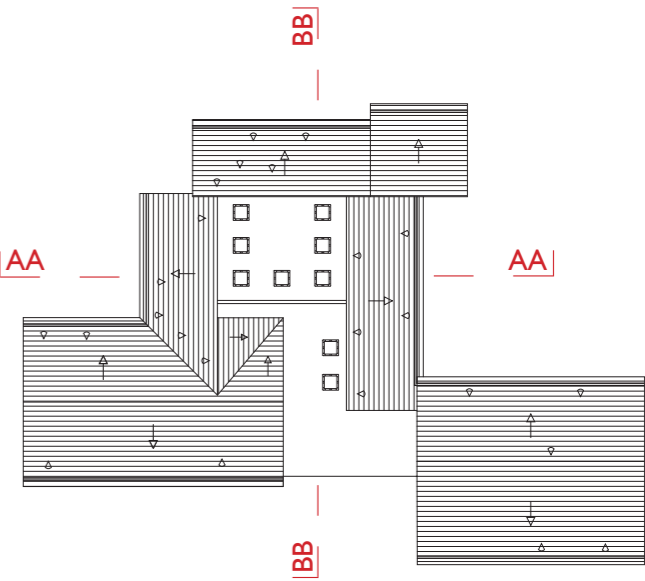


1/Etat existant

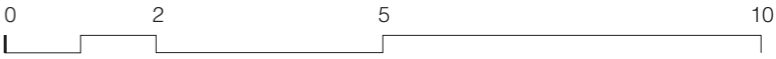
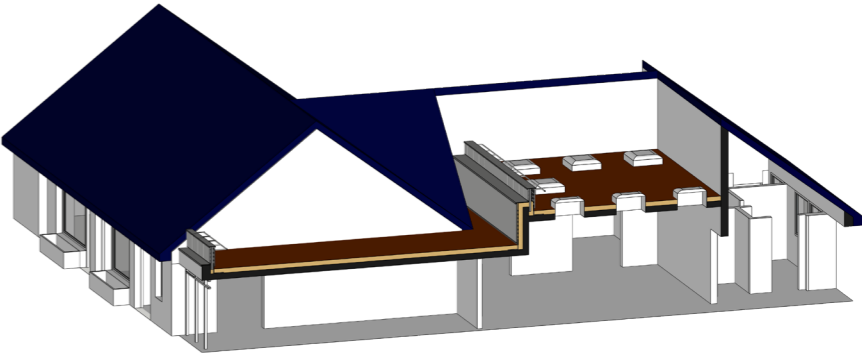
Plans



Coupe AA

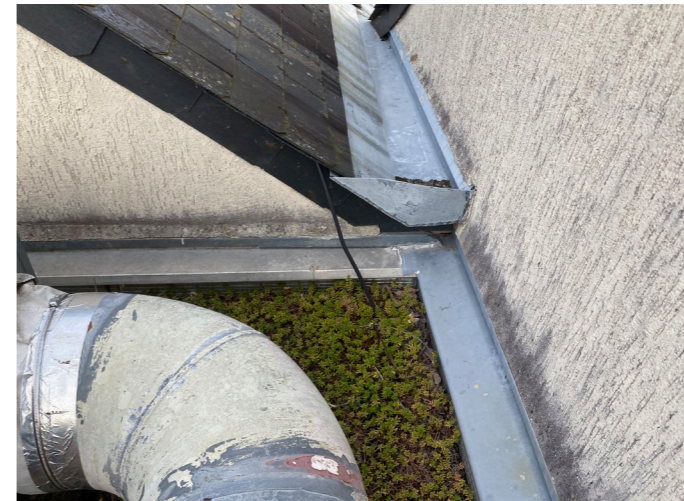


Coupe BB

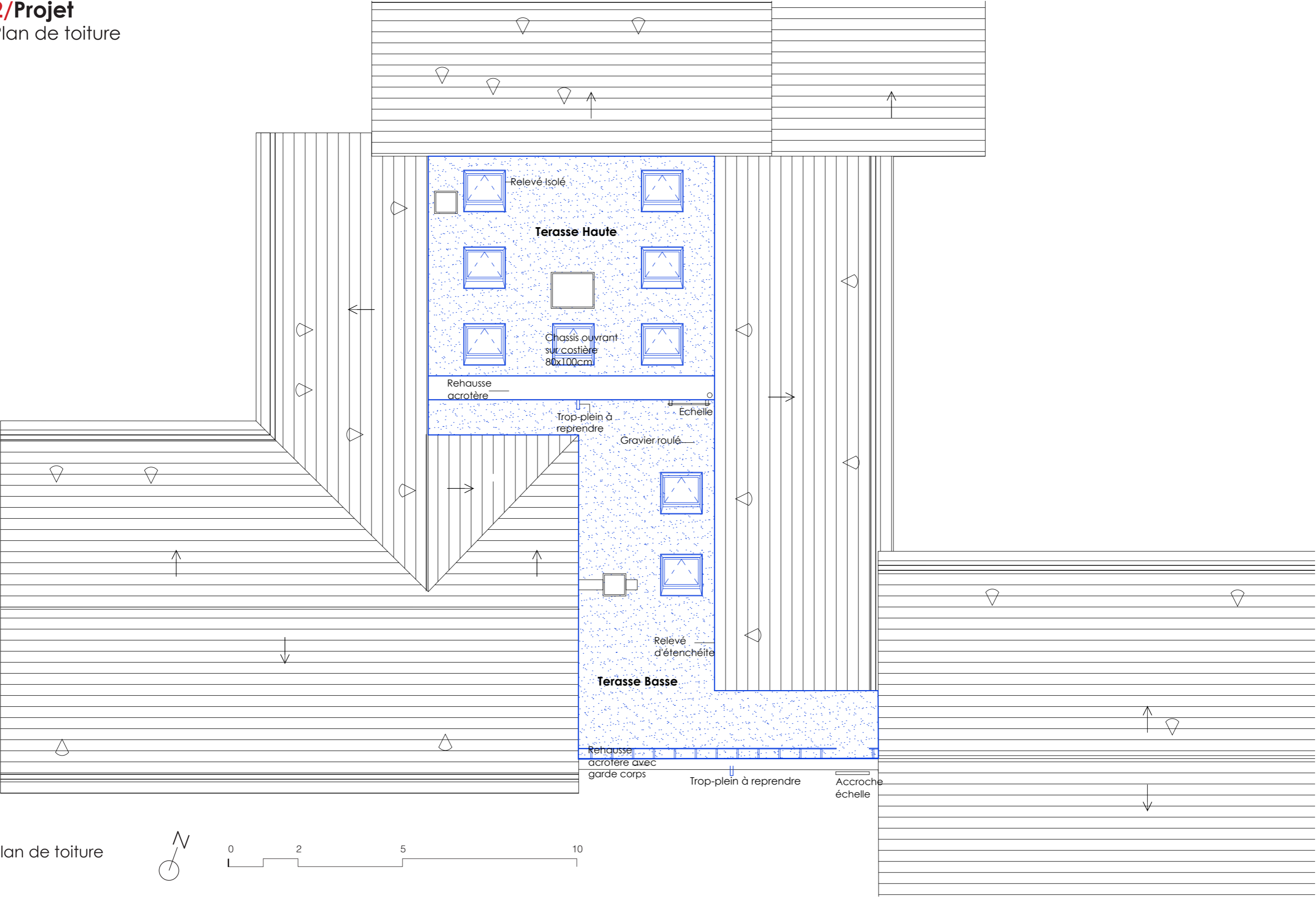


1/Etat existant

Photographies

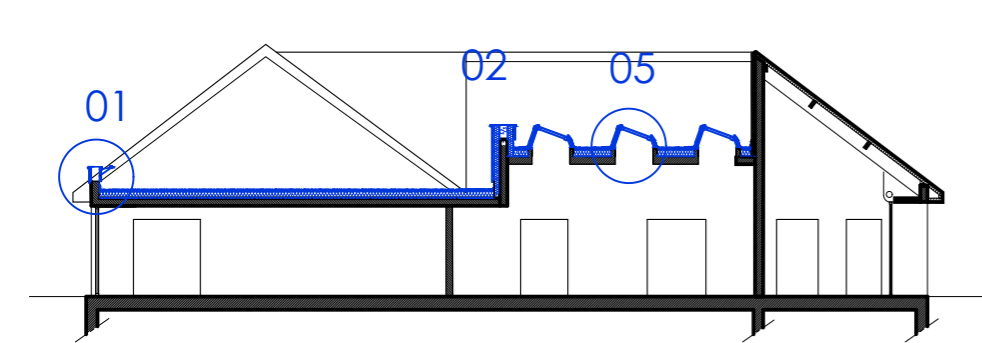


2/Projet
Plan de toiture

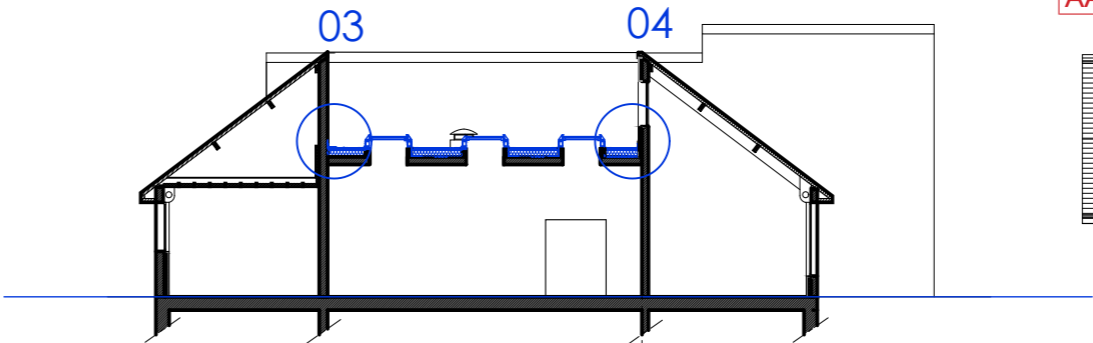


2/Projet

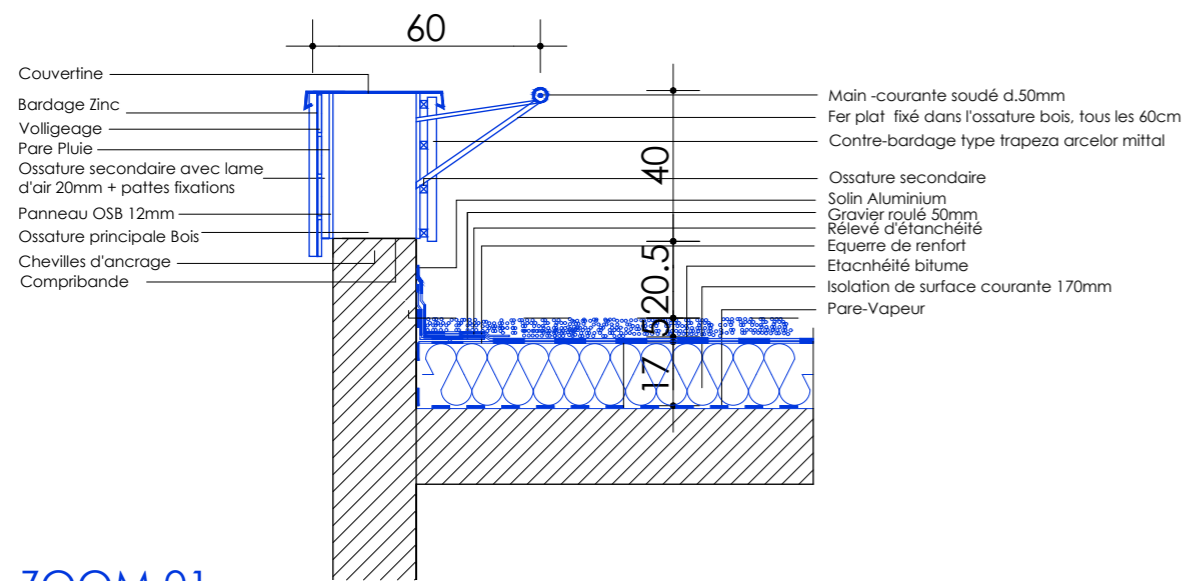
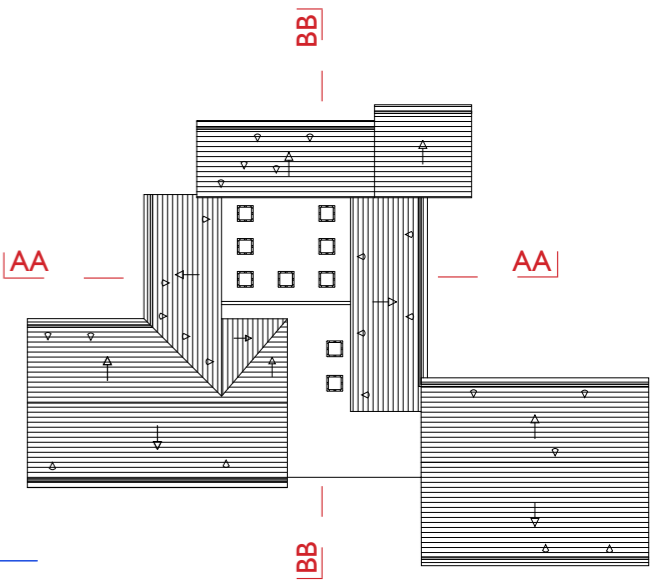
Coupes des réfections d'étanchéité et changement des lanterneaux



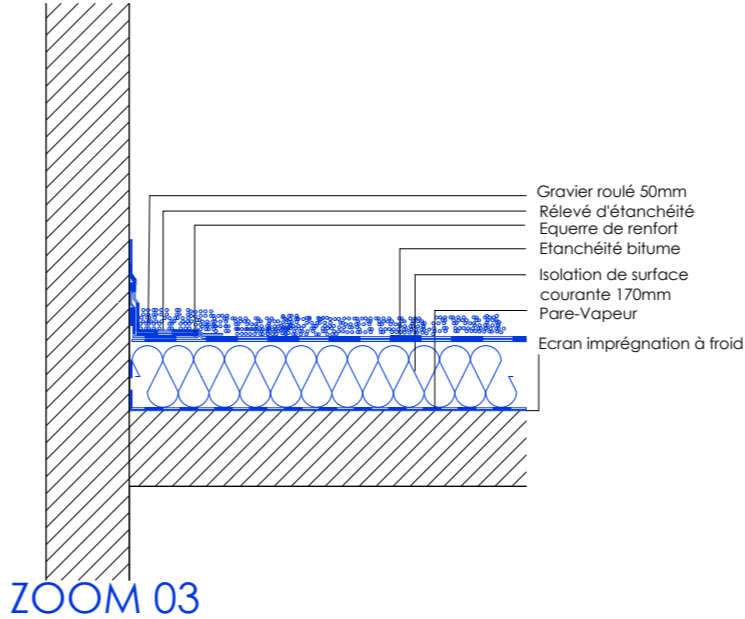
Coupe AA



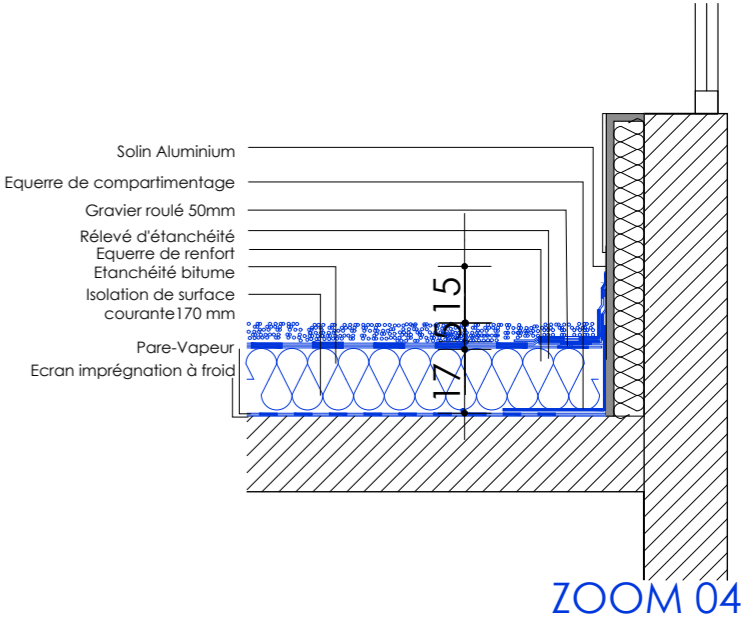
Coupe BB



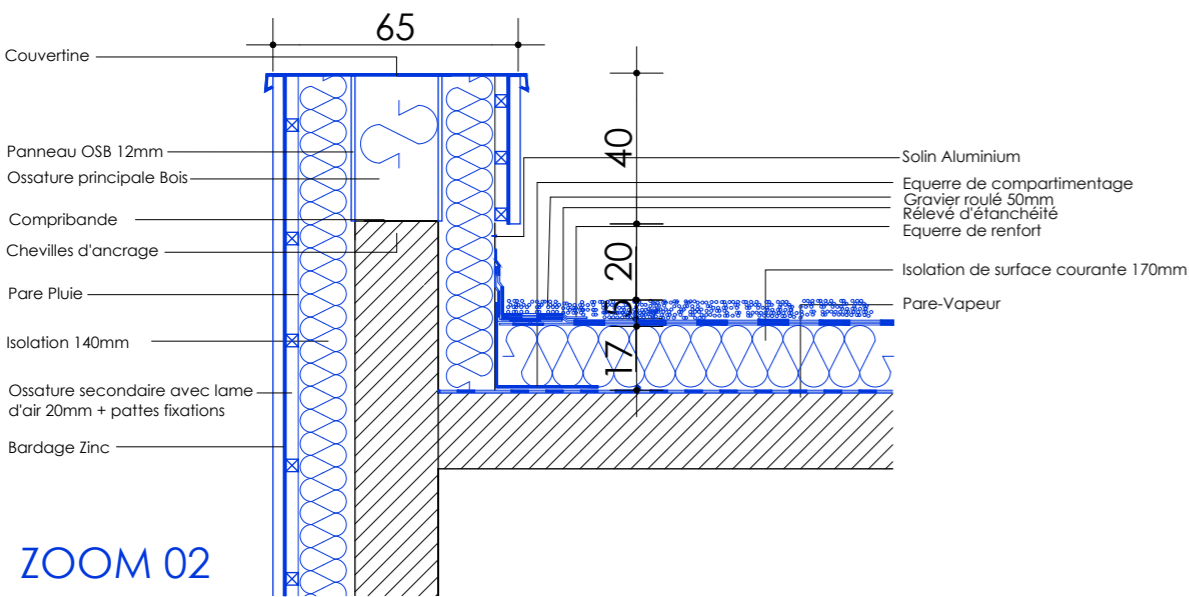
ZOOM 01



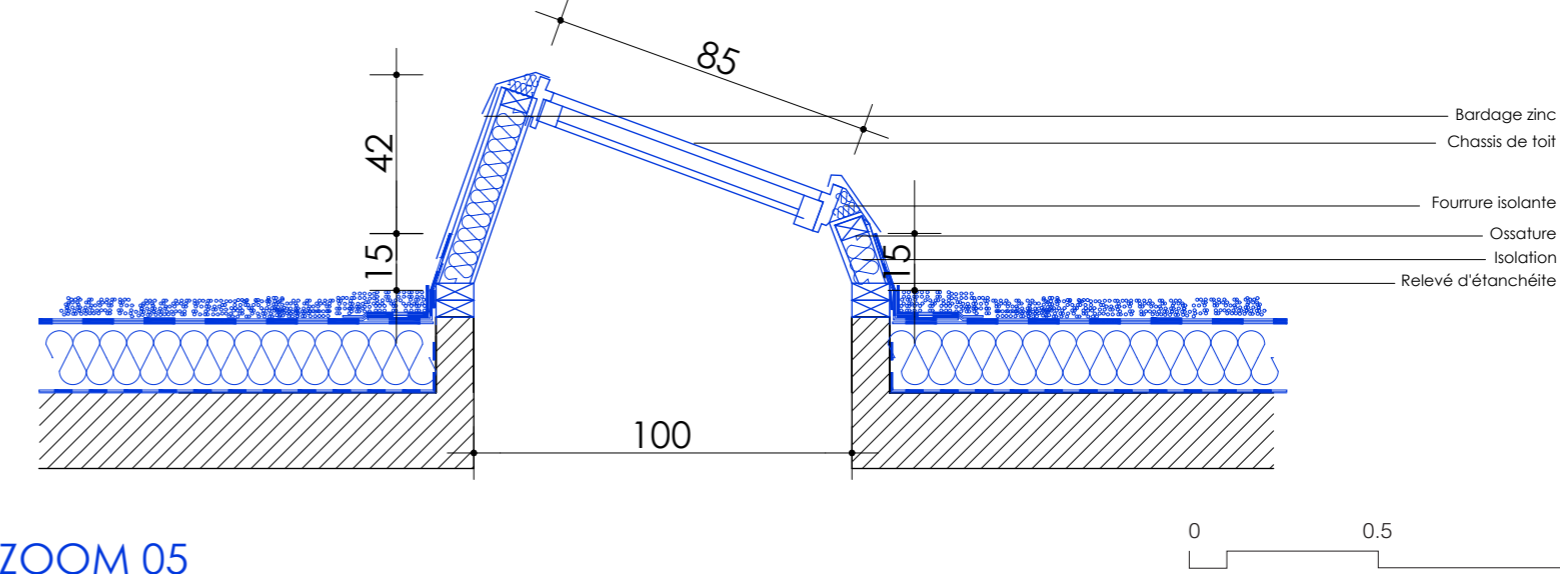
ZOOM 03



ZOOM 04



ZOOM 02



ZOOM 05



